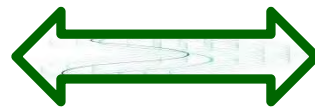


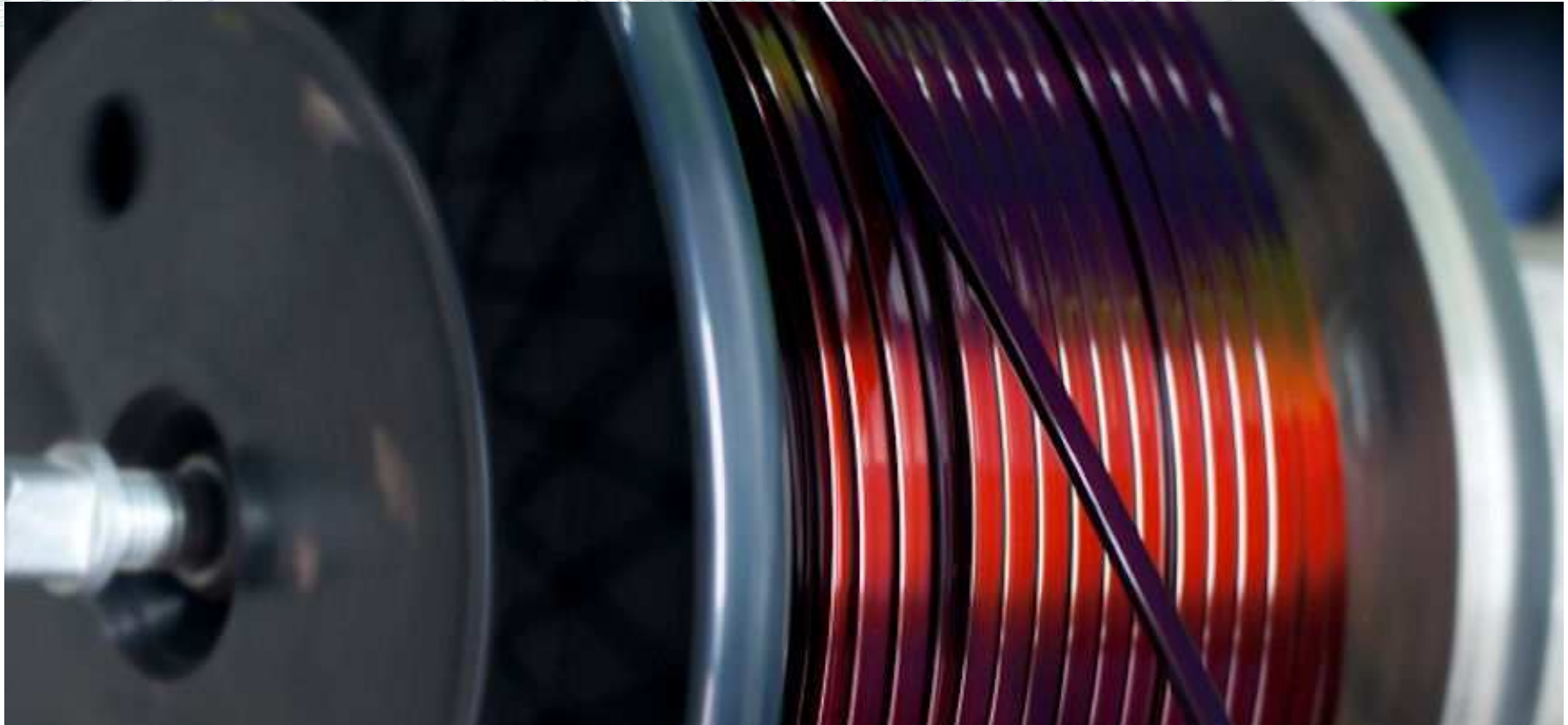
GROWING DRIVES



**GAIN
MARKET
SHARE**



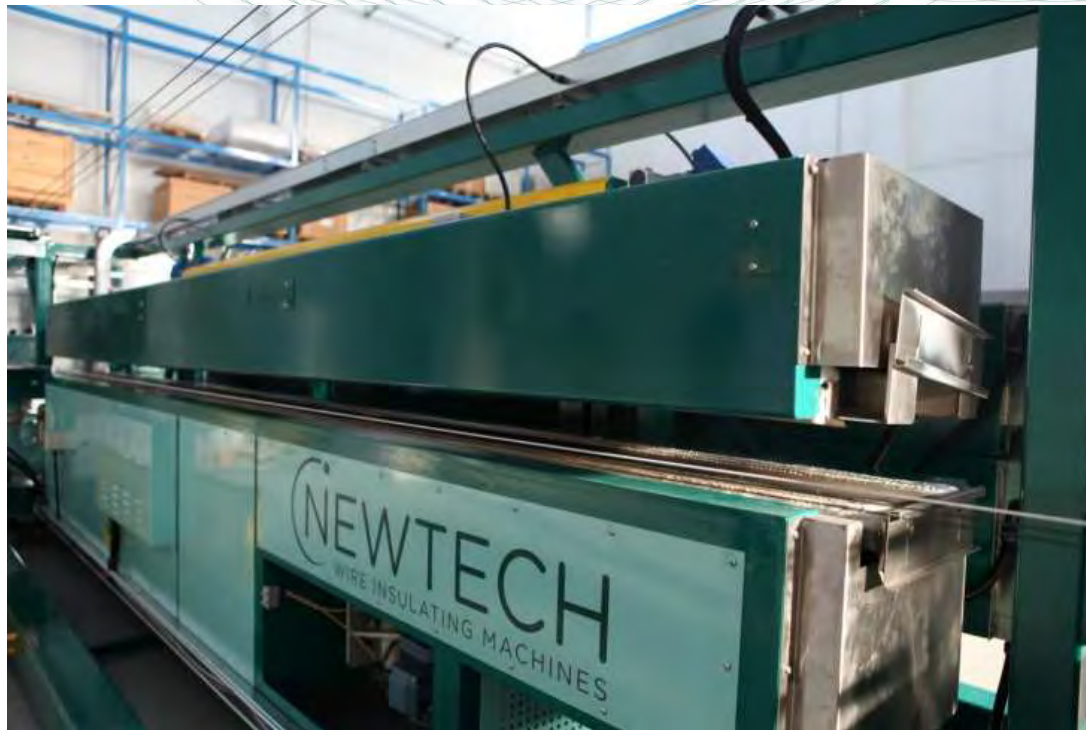
**DIVERSIFY
THE LINE
OF
PRODUCTS**



HIGH MANUFACTURING QUALITY



**HIGH AFTER SALES SERVICE
EFFICENCY**



ANTICIPATE THE MARKET NEEDS

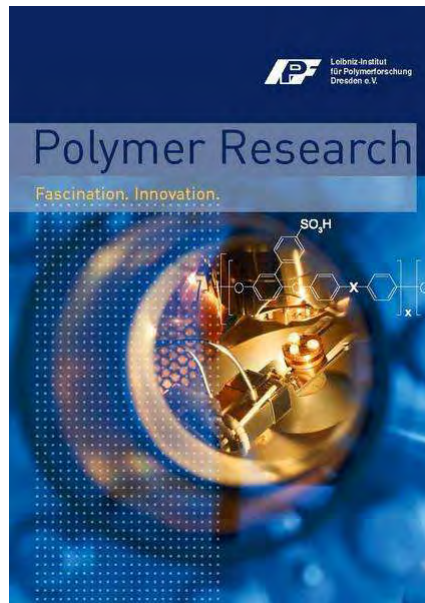


**ATTENTION OF ENERGY
CONSUMPTION
MAINTENANCE COST**

A close-up photograph of several parallel copper wires. The wires are thin and have a bright, metallic orange-gold color. They are set against a light, slightly textured background. The wires are arranged in a regular, vertical pattern across the width of the image.

RESEARCH AND INNOVATION TO FACE GLOBAL COMPETITION

RESEARCH AND DEVELOPMENT



**CONTINUOUS
INVESTMENT
In
RESEARCH**

1859-2009
**150 anni di Cultura
Politecnica**



PROCESS QUALITY CONTROL

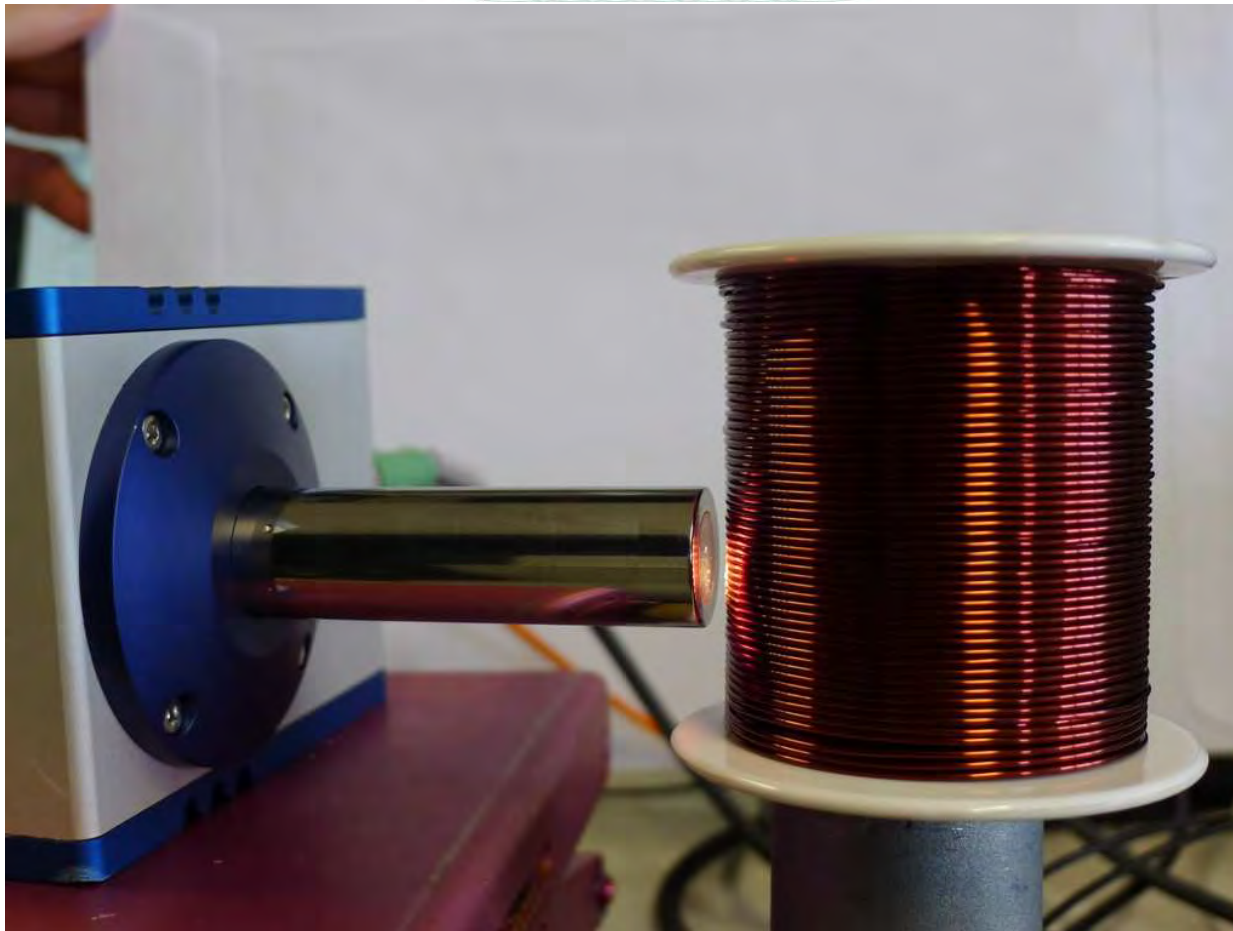


**ONE IN LINE
INSTRUMENT
FOR ALL THE
TESTS**

**N.I.R.
NEAR INFRARED SYSTEM
FOR
POLYMERIZATION
GRADE CONTROL**

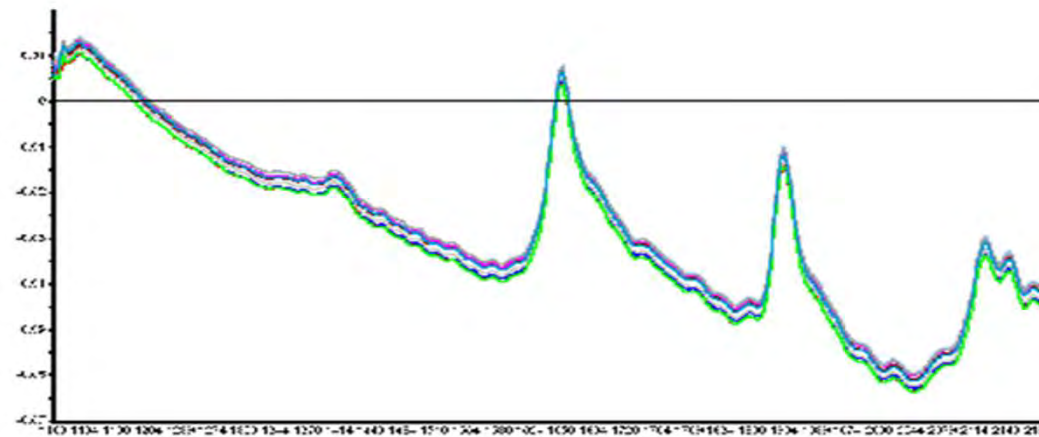
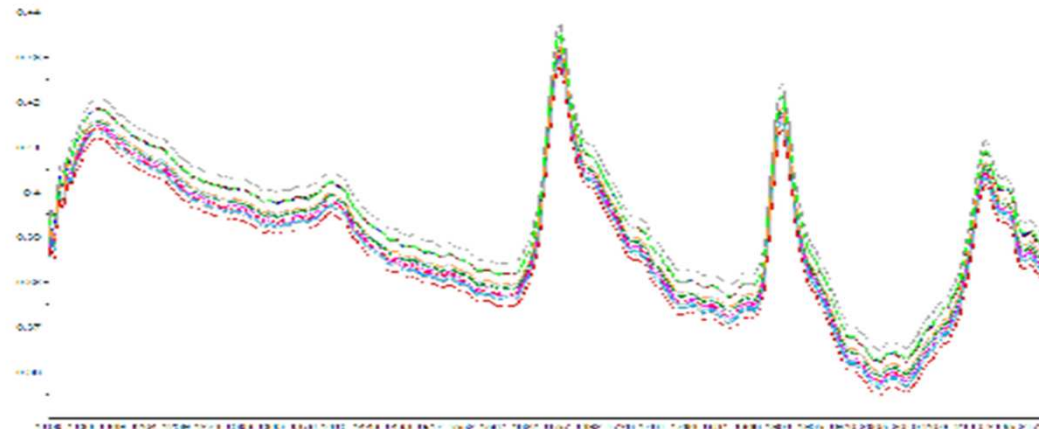
**FEEDBACK WITH THE
ENAMELLING PLANT**





Pretests for Newtech, 16.03.2012

- SentroPAT NIR 1100-2200/256, SentroProbe DR LS
- 10ms Integration time, 200 averages
- turning bobbin (around 120 rpm)



Observations:

- Interference effects are reduced due to the moment, but not completely removed (small amplitude waves underlying the absorbance spectra displayed).
- Further optimisation is necessary and seems to be possible based on this result.